
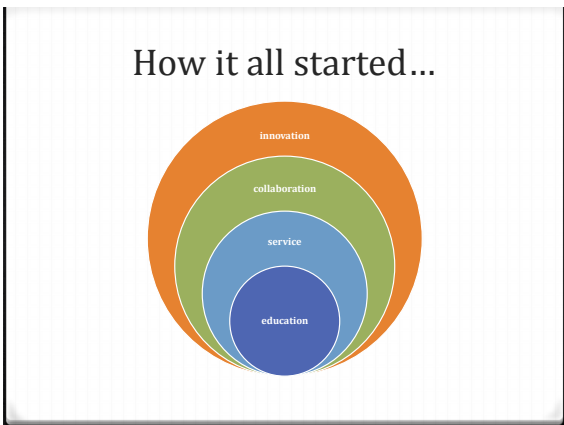




Objectives

- ◊ Identify opportunities for collaboration with health professions schools to provide outreach services to AgrAbility clients
- ◊ How to incorporate pharmacy students to educate AgrAbility clients about safe use of medications
- ◊ Discuss health outreach services that are within close proximity to AgrAbility clients





Knowing Your Population... Rural Missouri

- ◊ 58% of Missouri hospitals
- ◊ Majority with fewer than 25 beds
- ◊ 18% of Missouri's primary care physicians

Map 11 Primary Care Physicians per 10,000 Residents, March 2010
Source: Missouri Department of Health and Senior Services, Licensed-Retired Data

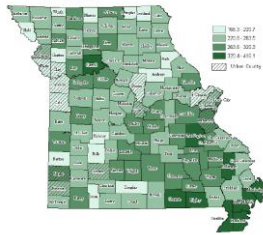


health.mo.gov/living/families/ruralhealth/index.php

Leading cause of death in Missouri...

- ◊ Rural heart disease death rate: 261.5 vs urban 235
- ◊ Rural counties make up 92% of counties with death rate higher than state rate

Map 15 Deaths Due to Heart Disease, 1999-2009
Age-adjusted Death Rates Missouri Rate: 245.6 per 100,000 residents
Source: Missouri Department of Health and Senior Services, Community Data Profiles, Leading Causes of Death Profile

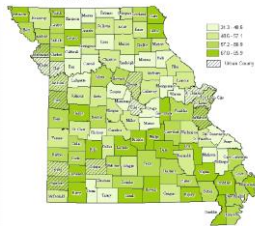


health.mo.gov/living/families/ruralhealth/index.php

Stroke: Cause of disability & death

- ◊ The stroke mortality rate for Missouri's rural counties (58.4) significantly higher than the rate for Missouri's urban counties (52.5)
- ◊ Rural counties make up 88% of the counties that have a stroke mortality rate significantly higher than the state rate

Map 17 Deaths Due to Stroke, 1999-2009
Age-adjusted Death Rates Missouri Rate: 54.9 per 100,000 residents
Source: Missouri Department of Health and Senior Services, Community Data Profiles, Leading Causes of Death Profile



health.mo.gov/living/families/ruralhealth/index.php

Needs Assessment

- o COPD:
 - o 4th leading cause of death in Missouri
 - o Rural death rate (53.2) due to COPD significantly higher than urban rate (45.6)
- o Diabetes:
 - o 6th leading cause of death in Missouri
 - o Rural Missouri counties make up 82% of the Missouri counties with significantly higher rate of diabetes deaths than the state rate

health.mo.gov/living/families/ruralhealth/index.php

Partners on Campus

- o Health professions students
 - o Pharmacy
 - o Medical
 - o Nursing
 - o Occupational therapy/Physical therapy
 - o Respiratory therapy
- o Student organizations
- o Network with faculty
- o Identify common goals/mission
- o Research



Why pharmacy students?

- o "most accessible healthcare profession"
- o "among most trusted healthcare professionals"
- o medication expert
- o Knowledge and Training
 - o Assessment
 - o Safe medication use
- o Communication skills
 - o Health literacy
 - o Adherence
 - o Counseling
 - o Education
- o Patient advocate



Safe medication use

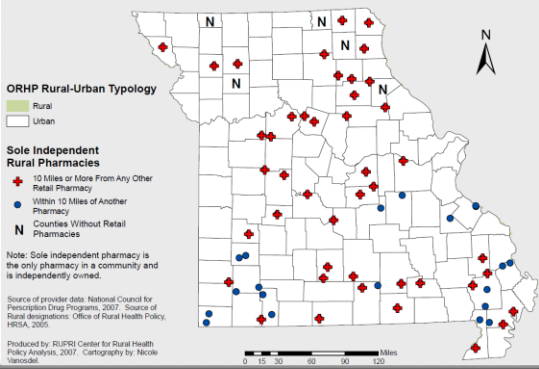
- o No medication is benign
- o Assess drug interactions
- o Prevent adverse effects
- o Patient-centered
- o Educate and empower patients



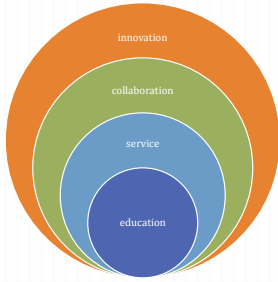
Venues

- | | |
|---|--|
| <ul style="list-style-type: none"> o Considerations <ul style="list-style-type: none"> o target population o proximity o access o services offered o feasibility o cost o awareness o advertising | <ul style="list-style-type: none"> o Accessible locations employed: <ul style="list-style-type: none"> o Public health & wellness events o County and state fairs o Community centers o Farm safety days o National Western Farm Show o AgrAbility On-site Farmstead Assessments |
|---|--|

Location of Sole Rural Community Independent Pharmacies in Missouri



Alignment of common goals



Questions?

cochranke@umkc.edu
FunkenbuschK@missouri.edu
